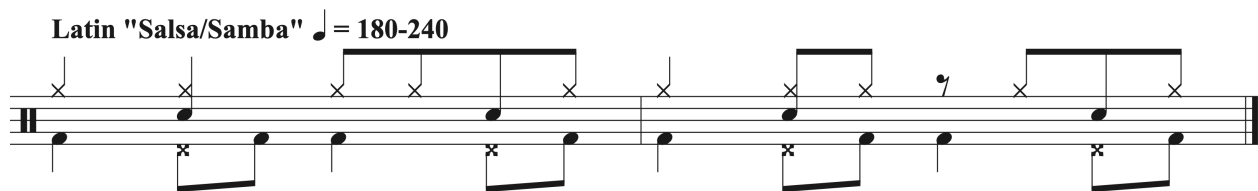


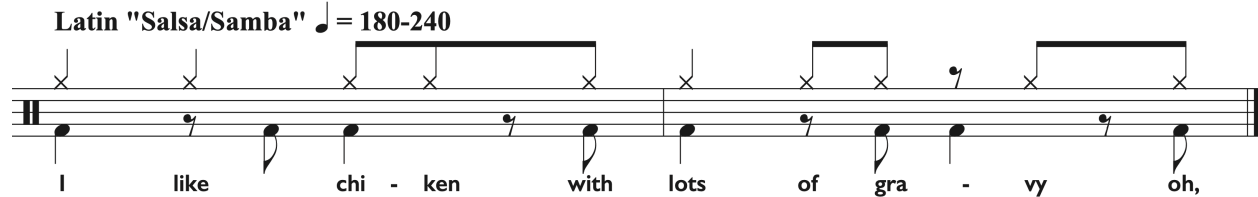
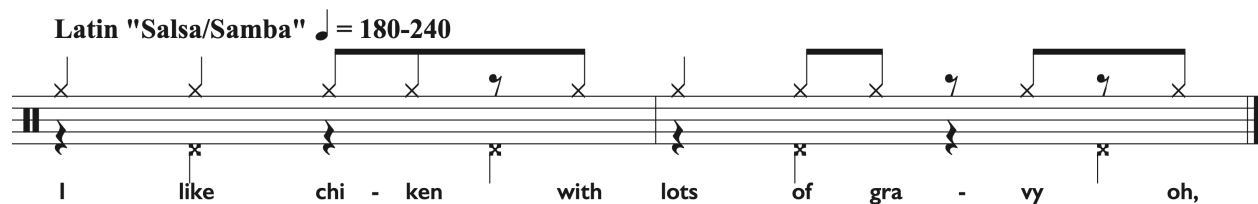
Generic Latin 2:3 Coordination

Salsa(Cuba) and Samba(Brazil) come from different countries and cultures, but elements of each get combined into a generic groove for Latin-Jazz on Drum set

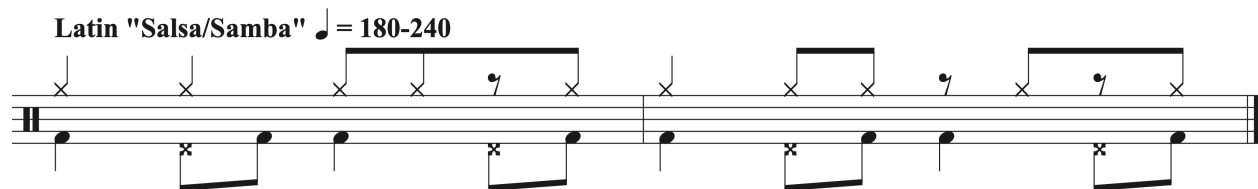
Full 2:3 Pattern



2-Way Coordination Build-ups



3-Way Coordination



Begin with 2-Way connections: Ride/HH, Ride/BD

Stabilize 3-Way coordination Ride/Feet

Listen to even, equal tone from all parts

DAN KRUMM PERCUSSION ACADEMY