

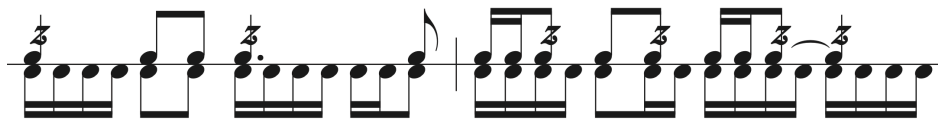
# Concert SD: Roll Speed and Rhythm

Rolls always have an underlying rhythm. Find it with a simple equation

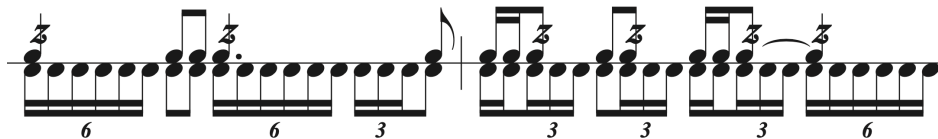
**Tempo x Subdivision = Roll Speed (400-500bpm is best)**

The same musical passage at different tempi requires a different underlying roll speed to stay smooth and comfortable.

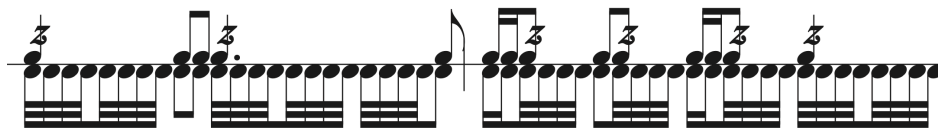
♩ = 100-120  
x4 = 400-480bpm



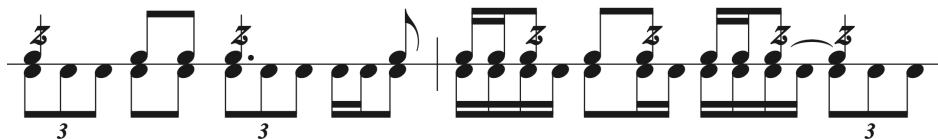
♩ = 66-80  
x6 = 396-480bpm



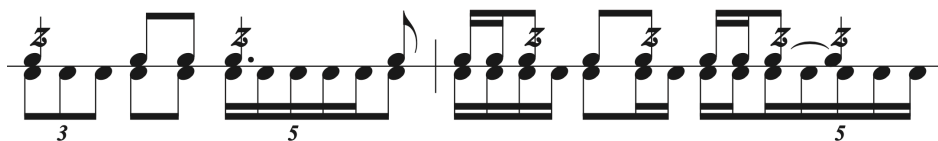
♩ = 50-60  
x8 = 400-480bpm



♩ = 120-140  
x3 = 360-420bpm  
x4 = 480-560bpm



♩ = 120-140  
x5:3 = 400-466bpm



Common example of 16th vs 6-tuplet or 32nd note subdivisions filling the same music at different tempi

16th to triplet energy can be too wide to blend rolls

The 5-tuplet 3+2 smooths it out and eases hand speed

Use this trick to analyze every piece you play with rolls, especially to diagnose difficult passages or frantic roll speeds.

**DAN KRUMM** PERCUSSION ACADEMY