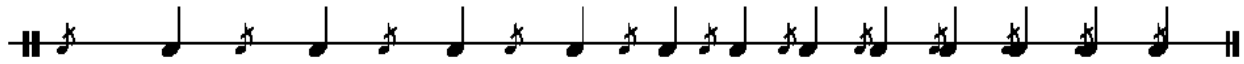


**Embellishments**, by definition, are out of time. This means they are not subdivided or counted like the regular notes they are attached to. In order to develop control of their duration and spacing, it is useful to place them both “out-of-time” and “in-time” within a subdivision.

A **flam** is a single grace-note embellishment. Begin by playing the first note very far from the second, then gradually bring them closer together until they land at the same time. You should be able to choose a spacing, and consistently maintain it for at least 10 flams in a row.



**Drags** and **Ruffs** are multiple grace-note embellishments. They have many sticking options. The sound is more important than the sticking used in most cases.

In the below example, what would normally appear as grace-notes are in diamond notation. This can be extended to include any number of grace notes, and is suitable for working on placement of any out-of-time effect on any instrument.

Repeat each measure below, then mix or alternate measures. ♩=40,60,80,100, etc.

